

A woman wearing a light blue hard hat, safety glasses, and a high-visibility yellow safety vest over a white collared shirt. She is looking upwards and to the right. The background is a dark industrial setting at night, with various pipes, structures, and bright lights. A large blue diagonal shape is overlaid on the left side of the image.

RXi2 Industrial PCs

Machine Automation Solutions

v06192020

2019 Emerson At-A-Glance

FOUNDED

1890

HEADQUARTERS IN

ST. LOUIS, MO

USA

RECOGNITION

#178

2019

FORTUNE 500
AMERICA'S LARGEST
CORPORATIONS
BY REVENUE

Top 50 Employers

WOMEN ENGINEERS MAGAZINE

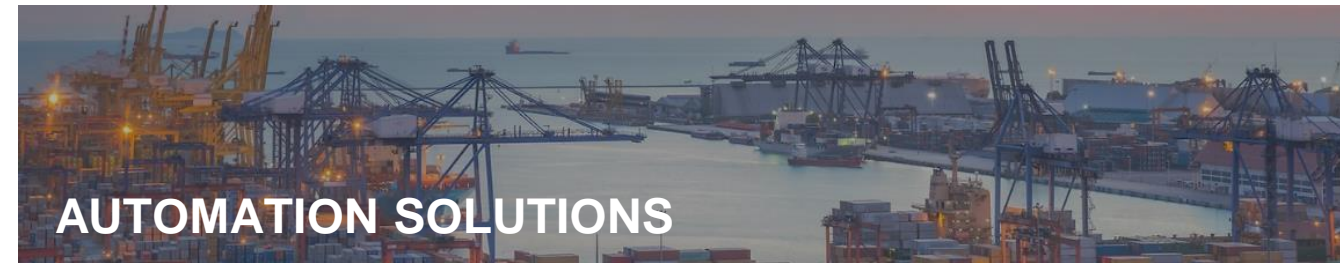
America's Best Employers

FORBES MAGAZINE

World's Most Admired Companies

FORTUNE MAGAZINE

TWO BUSINESS PLATFORMS



INNOVATION

EMERSON EMPLOYEES HELD

20K ACTIVE PATENTS WORLDWIDE IN 2019

\$18.4
BILLION

IN GLOBAL SALES
FISCAL YEAR 2019

63
YEARS

CONSECUTIVE
YEARS OF
INCREASED DIVIDENDS

NYSE:
EMR



Automation Solutions

Improving Process and Industrial Manufacturing Performance with Measurable Results

Industries Served include

Oil and Gas/Refining
Chemical
Power
Food and Beverage
Metals and Mining
Water and Wastewater
Life Sciences
Automotive
Electronics

Core Expertise & Key Brands

Industrial Internet of Things

- Plantweb

Systems and Asset Management

- DeltaV
- PACSystems
- Ovation

Measurement Instrumentation

- Rosemount
- Micro Motion

Fluid Control & Pneumatics

- ASCO
- AVENTICS

Valves, Actuators and Regulators

- Bettis
- KTM
- Fisher
- Vanessa
- Keystone

Welding, Assembly and Cleaning

- Branson
- HTE

Electrical and Lighting

- Appleton
- SolaHD

Industry Services and Solutions

RXi2 Industrial PC Portfolio

PACSystems™ RXi2 Industrial PCs

Powerful, expandable, and reliable industrial computers

Key Portfolio Benefits

- Reliable, high-performance computing with optional edge support*
- Patented thermal monitoring technology to thrive in rugged environments without performance degradation
- Fanless designs and SSD storage reduce overall maintenance needs

Core Innovation



**RXi2 – LP
Industrial PC**



**RXi2 – BP
Industrial PC**



**RXi2 – EP
Industrial PC**



**RXi2 – XP
Industrial PC**



**RXi2 – UP
Industrial PC**

*Off-the-shelf PACEdge options available on LP and BP product lines

PACSystems™ RXi2 Industrial PCs Overview



RXi2 – LP

Basic

Rugged computing at an attractive price



RXi2 – BP

Advanced

High-performance analytics and graphics in an optimized package



RXi2 – EP



RXi2 – XP

Premium

Premium performance, features and expansion for critical applications with maximum flexibility



RXi2 – UP

- ✓ **Flexible footprint and performance** to fit a wide range of applications
- ✓ **Fanless design and SSD storage** to eliminate moving parts that are prone to failure
- ✓ **100% CPU performance even at maximum operating temperatures** with patented heat dissipation technology
- ✓ **RAID storage options** provide additional redundant storage capability*
- ✓ **Up to four (4) optional expansion slots** for adding functionality to support your future application needs*
- ✓ **PACEdge IoT Stack & Movicon.NExT** software available to enable industry-leading edge computing options[†]
- ✓ **Customization options available** upon request to adapt to your unique or embedded computing needs

[†]LP and BP product lines *EP, XP and UP product lines

PACSystems™ RXi2 Industrial PCs Capabilities

User Challenges



Total Cost of Ownership



Reliable Performance Where It's Needed



Connectivity With Security



Customization Options

Our Value

Fanless design and SSD storage **eliminate moving parts and reduce maintenance**

Flexible form factor to optimize performance

Extended lifecycles, designed for industry

Patented cooling technology for predictable performance, even in **extreme conditions**

Ruggedized designs for **high shock and vibration tolerance**

Industry leading connectivity options including flexible RAID and PCIe slots

TPM 2.0 and Secure Boot help **prevent against software intrusion** during start up

Configurable solutions including embedded solutions that adapt to your unique needs

Scalable Industrial PCs



Specifications	LP	BP	EP	XP	UP
Processor	<p>AMD G-Series SOC second generation GX-210HL processor, 7W 2c 1.0GHz 1MB cache</p> <p>AMD G-Series SOC second generation GX-412GC processor, 15W 4c 1.2-1.6GHz 2MB cache</p>	<p>AMD Ryzen Embedded V1605B, 12-25W, 4c 2.0GHz (3.6GHz)</p> <p>AMD Ryzen Embedded V1404I, 12-25W, 4c 2.0GHz (3.6GHz)</p> <p>AMD Ryzen Embedded R1505G, 12-25W, 2c 2.4GHz (4.3GHz)</p>	<p>AMD RX-225FB processor 15~17W CTDTP 2c 2.2GHz (3.0GHz) 1MB cache</p> <p>AMD RX-427BB processor 30~35W CTDTP 4c 2.7GHz (3.6GHz) 4MB cache</p>	<p>Intel® Core™ i3-6102E, i5-6440EQ, i7-6820EQ</p> <p>Intel® Celeron™ G3900E, G3902E</p> <p>Intel® XEON® processor E3-1505L, E3-1505</p>	<p>Intel® Core™ i3-7102E, i5-7442EQ, i7-7820EQ</p> <p>Intel® XEON® processor E3-1505M, E3-1505L, E3-1501M</p>
Memory (RAM)	4GB or 8GB DDR3L memory	Up to 16GB DDR4-2400	Up to 16 GB DDR3L-1866	Up to 32GB DDR4-2133	Up to 32GB DDR4-2400
Standard Operating Temp. Range	-25°C to +65°C (up to 55°C when DIN rail mounted)	0°C to +60°C (available -40°C to +70°C options)	0°C to +60°C (available -40°C to +70°C options)	0°C to +60°C (available -40°C to +70°C options)	0°C to +60°C (available -40°C to +70°C options)
Storage (SSD Options)	<p>Primary storage device – SATA slim</p> <p>32GB / 64GB / 128GB</p>	<p>Primary storage device – M.2 SATA 6 gigabit/s</p> <p>Micro-SD slot, user accessible, supports OS boot, hot plug</p>	<p>Primary storage device – M.2 PCI Express gen3 x4 or M.2 SATA Gen3</p> <p>Secondary storage option – Twin 2.5” SATA drive bays, hot swap and RAID enabled</p> <p>CFast slot, user accessible, supports boot, hot plug Ethernet</p> <p>Four 1-gigabit Ethernet channels – RJ-45 standard, SFP optional</p> <p>One 1-gigabit Ethernet channel w/ remote management capability – RJ45</p>	<p>Primary storage device – M.2 PCI Express gen3 x4 or M.2 SATA Gen3</p> <p>Secondary storage option – Twin 2.5” SATA drive bays, hot swap and RAID enabled</p> <p>CFast slot, user accessible, supports boot, hot plug</p>	<p>Primary storage device – M.2 PCI Express gen3 x4 or M.2 SATA Gen3</p> <p>Secondary storage option – twin 2.5” SATA drive bays, hot swap and RAID enabled</p> <p>CFast slot, user accessible, supports boot, hot plug</p>
Expansion Slots	N/A	<p>Optional mini PCIe slot with UIM card holder, can be used for cellular modem or Wi-Fi/Bluetooth</p> <p>Optional 1, 2 PCIe expansion slots</p>	<p>Mini-PCIE card site for NvSRAM card, LTE modem, or other</p> <p>M.2 communications slot for Wi-Fi and Bluetooth</p> <p>PCI Express expansion slots:</p> <ul style="list-style-type: none"> – Zero – One gen3 x4 – Two gen2 x4 	<p>Mini-PCIE card site for NvSRAM card, LTE modem, or other</p> <p>M.2 communications slot for W-Fi and Bluetooth</p> <p>PCI Express expansion slots:</p> <ul style="list-style-type: none"> – Zero – One gen3 x4 – Two gen2 x4 – Four 1x gen2 x4, 3 gen2 x1 	<p>Mini-PCIE card site for NvSRAM card, LTE modem, or other</p> <p>M.2 communications slot for Wi-Fi and Bluetooth</p> <p>PCI Express expansion slots:</p> <ul style="list-style-type: none"> – Zero – One gen3 x4 – Two gen2 x4 – Four 1x gen2 x4, 3 gen2 x1
Ideal Applications	A few analytics at the machine level	Increased analytics, compact form factor	large scale applications in a flexible form factor		

PACSystems™ RXi2-LP

Thinnest form factor

Processor: Dual Core (1.0GHz) or Quad Core (1.2GHz) AMD G-Series processor

Memory: 4 or 8 GB RAM

Storage: 32, 64, 128 GB SSD

Environment: -30 to 65°C operating temp

Interfaces:

- 2 or 4 10/100/1000 Base T Ethernet RJ45
- RS-232 COM port (5-pin connector)
- RS-485 COM port (5-pin connector)
- 2 or 4 USB ports
- DisplayPort
- Mic in (Mono), (3.5mm jack)
- Line out (Stereo), (3.5mm jack)



Ideal for Machine Level Analytics and Edge Connectivity Applications

PACSystems™ RXi2-BP

Powerful computing in a compact form factor

Processors: AMD Ryzen V1000 or R1000 processors

- V1605B, 12-25W, Quad Core 2.0 - 3.6GHz
- V1404I, 12-25W, Quad Core 2.0-3.6GHz
- R1505G, 12-25W, Quad Core 2.4-3.3GHz
- R1305G, 8-10W, Dual Core 1.5-2.8GHz

Memory: 4, 8, 16 GB RAM

Storage: 128, 256, 512 GB SSD

Expansions: Optional 1 or 2 PCIe card expansion slots

Environment: -40 to 70°C operating temperature options

Interfaces:

- Four (4) Ethernet ports
- RS-232 and isolated RS-422/RS-485 Serial communications
- Four (4) USB ports
- DisplayPort++ (up to 4 daisy-chained display monitors)
- Optional cellular modem, WiFi and Bluetooth® wireless connectivity
- Optional mini-PCIe slot with UIM card holder



Increased Analytics & Graphics Capability for Edge Applications with Reduced Footprint

PACSystems™ RXi2-EP, RXi2-XP and RXi2-UP

One powerful, modular design for high performance computing needs

Processors: AMD Bald Eagle (RXi2-EP) or Intel Sky Lake/Kaby Lake (RXi2-XP/ RXi2-UP)

Storage: 8, 16, 32 GB RAM, 128, 256, 512 GB SSD

Displays: Up to 3 displays (RXi2-XP/RXi2-UP) or 4 displays for (RXi2-EP)

Expansions: 0,1,2,4 PCIe card expansion slots

Storage: Optional RAID enabled secondary storage

Security: Trusted Platform Module (TPM)

Environment: -40 to 70°C operating temperature options

Interfaces:

- Up to five (5) Ethernet ports
- 2 RS-232 and 2 RS-422/RS-485 Serial Communications
- 6 USB ports
- DisplayPort++
- LTE modem option
- Wifi/Bluetooth radio option



0 Slot



1 Slot



2 Slot



4 Slot

Ideal for Premium, Critical and Large-scale Applications in Flexible Form Factors

PACSystems™ Industrial PCs Patented Thermal Design

Superior Thermal Performance at High Temperatures Without CPU Throttling



Predictable, maximum performance across the entire temperature range



Increased IPC life expectancy attributable to lower operating temperature of components

Enabled by Patented Technologies



Patented Thermal Design:

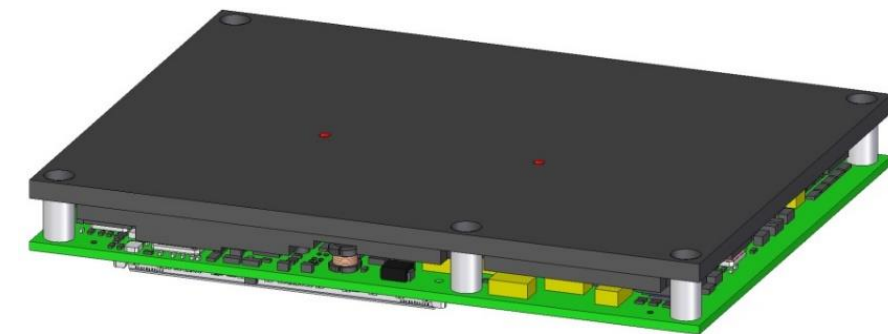
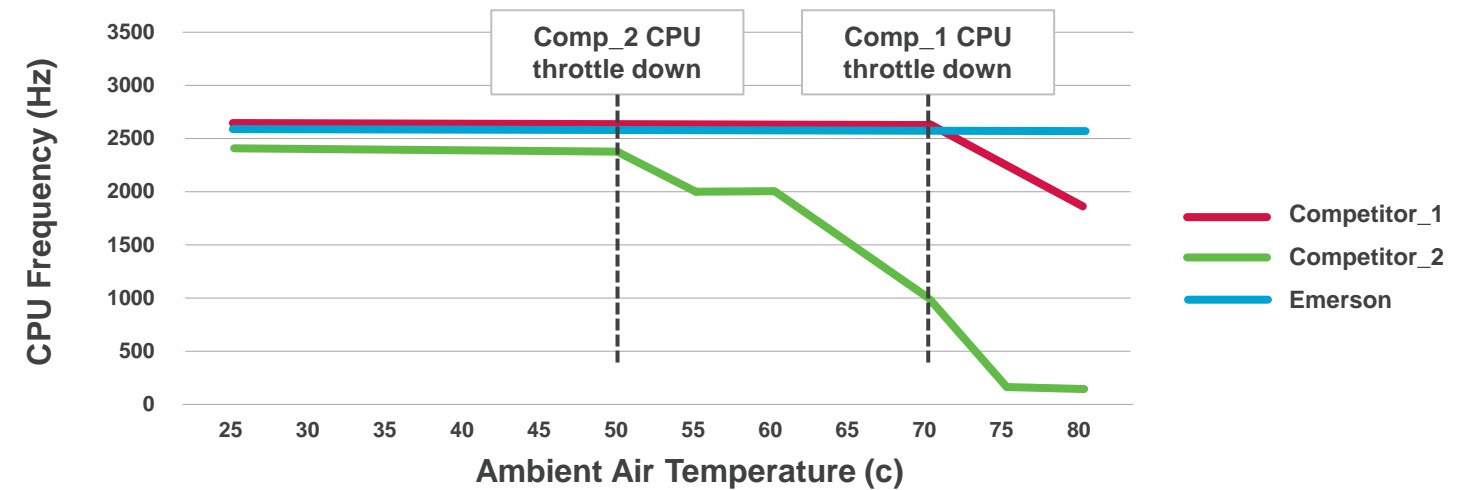
Optimizes conductive path between hot spots



Patented Thermal Testing:

Tested to ensure that each unit delivers thermal performance

CPU Performance vs. Ambient Temperature



Patented Heat Sink Design

RXi2 Industrial PCs Deliver Best-in-Class Performance Across the Temperature Range

PACSystems™ RXi2 Industrial PCs

